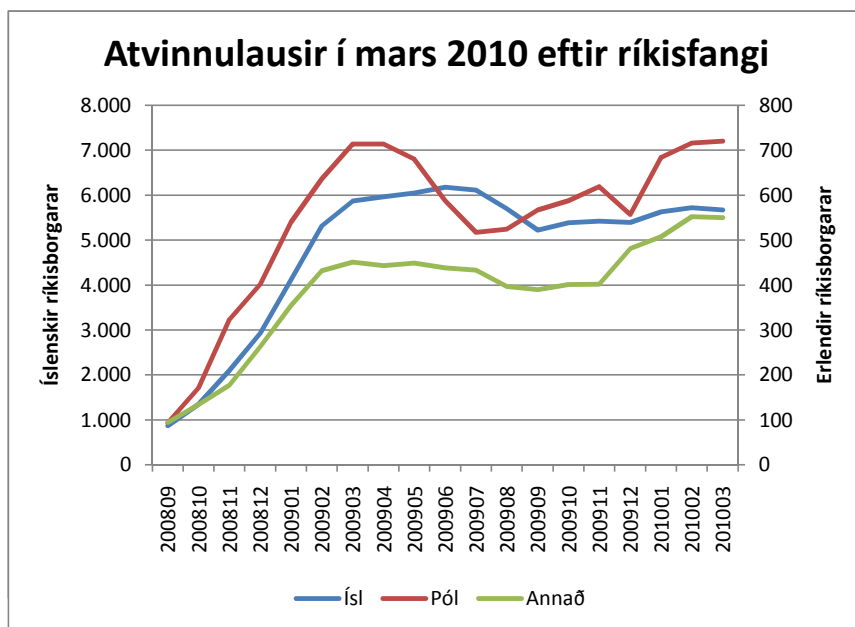


Fjöldi í lok mánaðar í Reykjavík eftir ríkisfangi

	200809	200810	200811	200812	200901	200902	200903	200904	200905
1 ÍSL	873	1.344	2.098	2.928	4.119	5.315	5.873	5.963	6.051
2 PÓL	93	171	323	402	540	636	714	714	680
3 Annað	94	134	177	263	354	432	451	443	449
Samtals	1.060	1.649	2.598	3.593	5.013	6.383	7.038	7.120	7.180



Fjöldi í lok mánaðar í Reykjavík eftir ríkisfangi

200906	200907	200908	200909	200910	200911	200912	201001	201002	201003
6.176	6.116	5.702	5.220	5.385	5.420	5.392	5.626	5.719	5.669
588	517	524	567	588	619	557	684	716	720
438	433	397	390	401	402	481	507	552	550
7.202	7.066	6.623	6.177	6.374	6.441	6.430	6.817	6.987	6.939