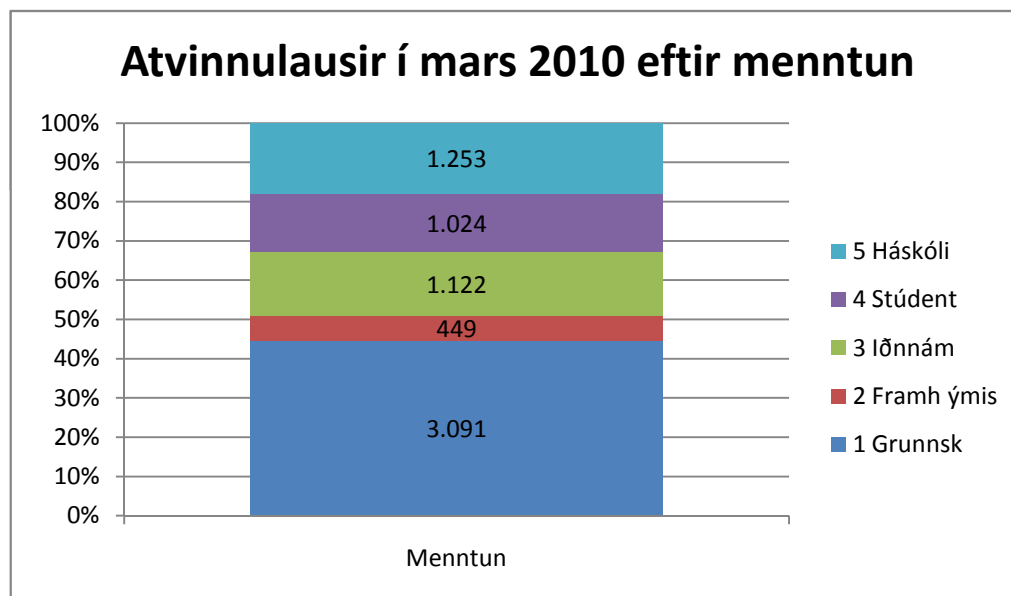


Fjöldi í lok mánaðar í Reykjavík

	200809	200810	200811	200812	200901	200902	200903	200904	200905	200906	200907	200908
1 Grunnsk	486	782	1.213	1.666	2.227	2.734	3.028	3.014	3.144	3.115	3.036	2.754
2 Framh ýmis	98	152	216	284	360	426	474	487	478	475	456	431
3 Iðnnám	117	199	353	562	918	1.213	1.336	1.326	1.224	1.093	1.022	972
4 Stúdent	134	208	324	444	628	825	935	981	983	1.123	1.144	1.074
5 Háskóli	225	308	492	637	880	1.185	1.265	1.312	1.351	1.396	1.408	1.392
Samtals	1.060	1.649	2.598	3.593	5.013	6.383	7.038	7.120	7.180	7.202	7.066	6.623



Fjöldi í lok mánaðar í Reykjavík

	200909	200910	200911	200912	201001	201002	201003
1 Grunnsk	2.763	2.835	2.888	2.847	3.014	3.070	3.091
2 Framh ý	412	433	422	440	457	462	449
3 Iönnám	934	965	987	997	1.078	1.148	1.122
4 Stúdent	847	897	923	928	1.009	1.034	1.024
5 Háskóli	1.221	1.244	1.221	1.218	1.259	1.273	1.253
Samtals	6.177	6.374	6.441	6.430	6.817	6.987	6.939