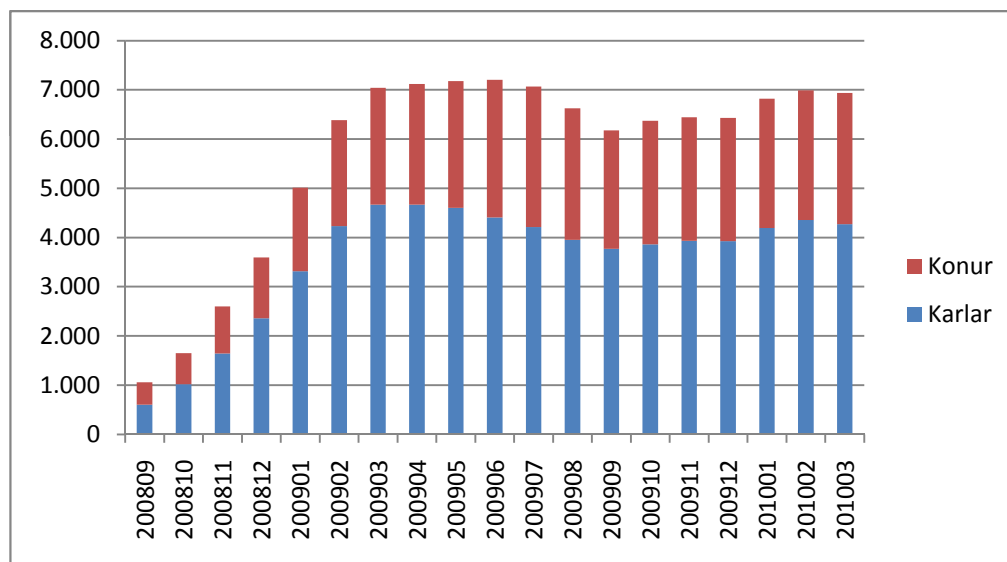


### Fjöldi í lok mánaðar í Reykjavík eftir kyni

	200809	200810	200811	200812	200901	200902	200903
<b>Karlar</b>	601	1.016	1.645	2.357	3.315	4.230	4.667
<b>Konur</b>	459	633	953	1.236	1.698	2.153	2.371
<b>Samtals</b>	<b>1.060</b>	<b>1.649</b>	<b>2.598</b>	<b>3.593</b>	<b>5.013</b>	<b>6.383</b>	<b>7.038</b>
<b>Karlar, hlutföll</b>	56,7%	61,6%	63,3%	65,6%	66,1%	66,3%	66,3%
<b>Konur, hlutföll</b>	43,3%	38,4%	36,7%	34,4%	33,9%	33,7%	33,7%



### Fjöldi í lok mánaðar í Reykjavík eftir kyni

200904	200905	200906	200907	200908	200909	200910	200911
4.664	4.604	4.409	4.213	3.952	3.770	3.862	3.931
2.456	2.576	2.793	2.853	2.671	2.407	2.512	2.510
<b>7.120</b>	<b>7.180</b>	<b>7.202</b>	<b>7.066</b>	<b>6.623</b>	<b>6.177</b>	<b>6.374</b>	<b>6.441</b>
65,5%	64,1%	61,2%	59,6%	59,7%	61,0%	60,6%	61,0%
34,5%	35,9%	38,8%	40,4%	40,3%	39,0%	39,4%	39,0%

### Fjöldi í lok mánaðar í Reykjavík eftir kyni

200912	201001	201002	201003
3.924	4.190	4.356	4.271
2.506	2.627	2.631	2.668
<b>6.430</b>	<b>6.817</b>	<b>6.987</b>	<b>6.939</b>
61,0%	61,5%	62,3%	61,6%
39,0%	38,5%	37,7%	38,4%